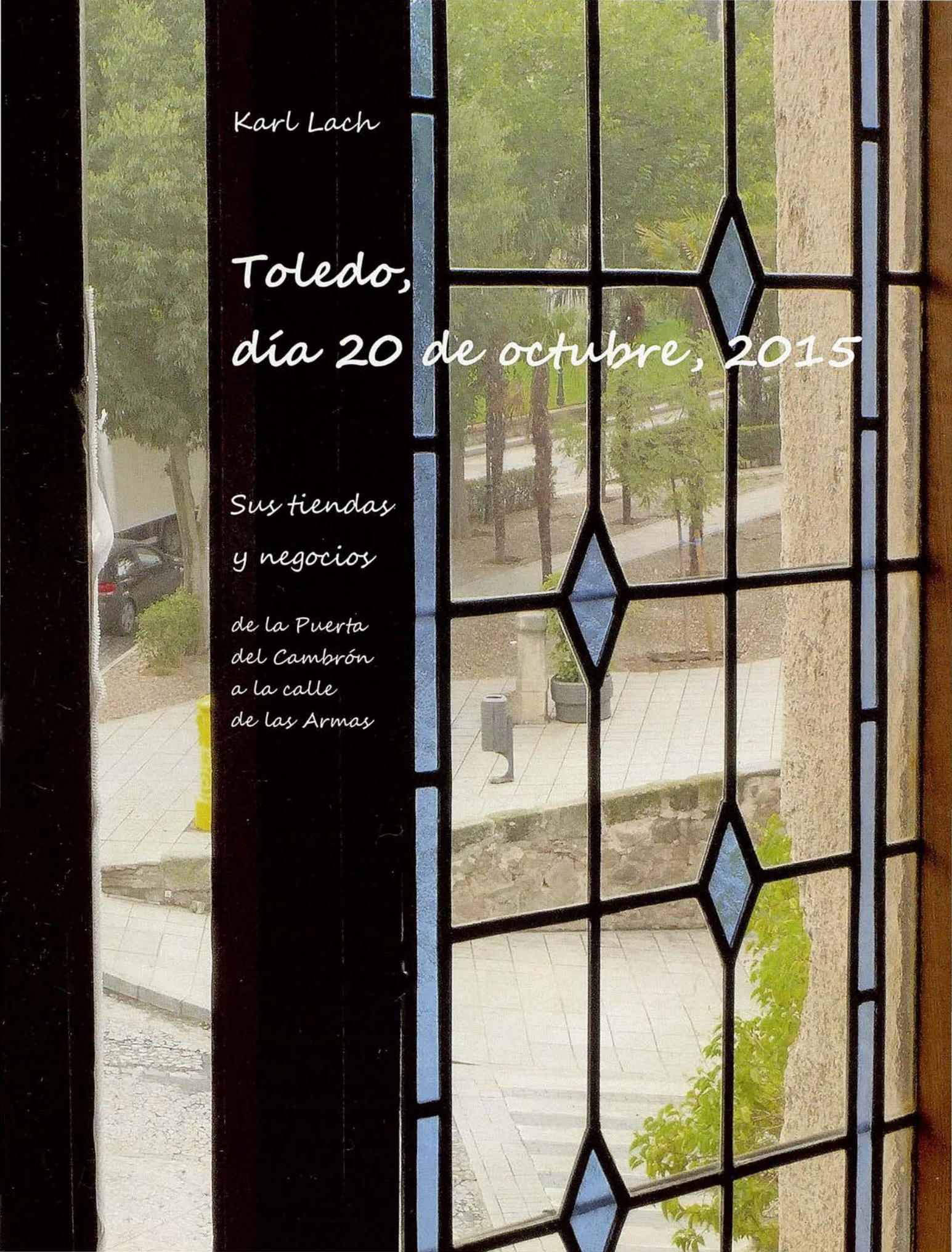


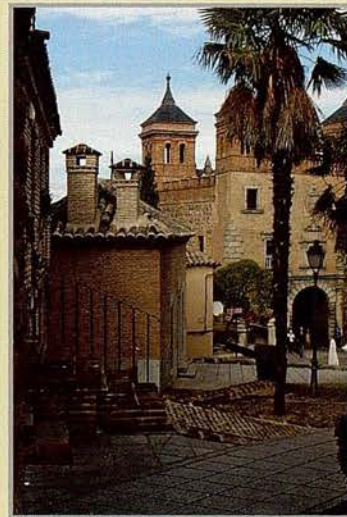
Karl Lach

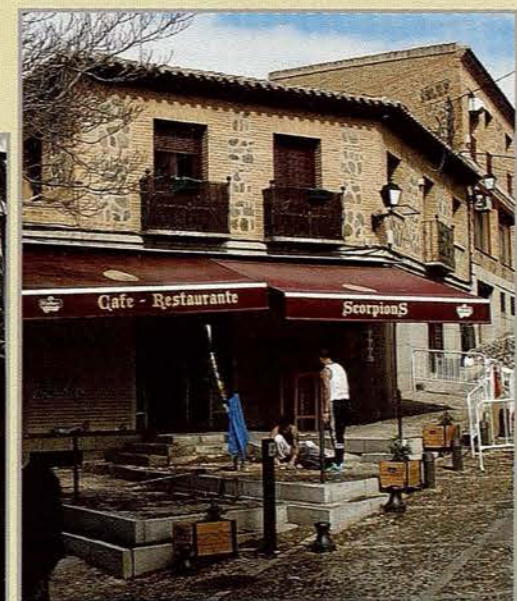
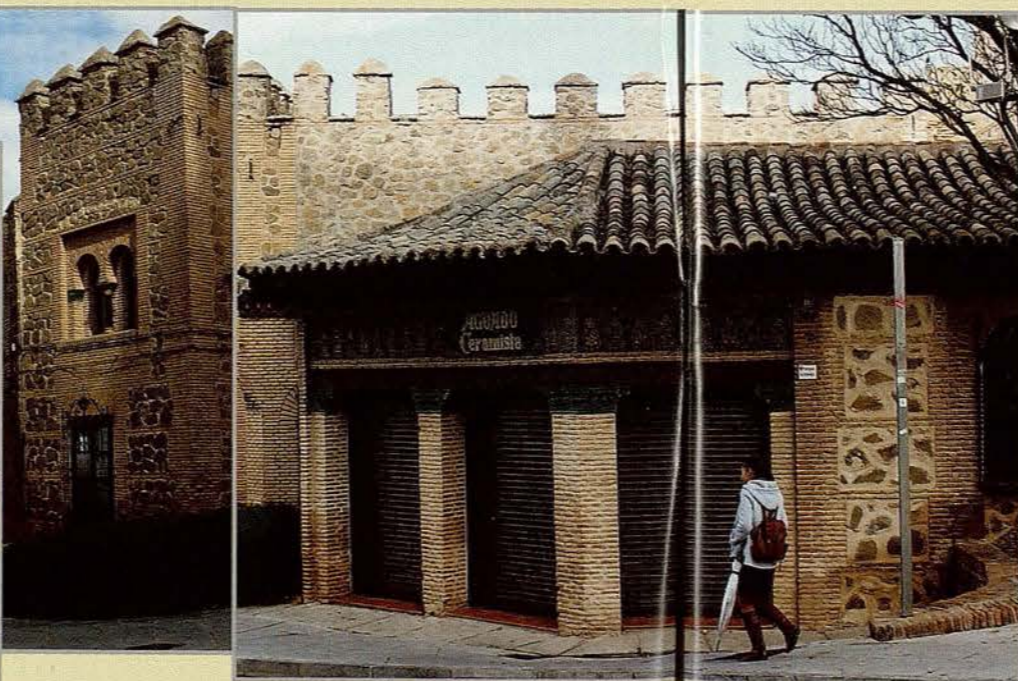
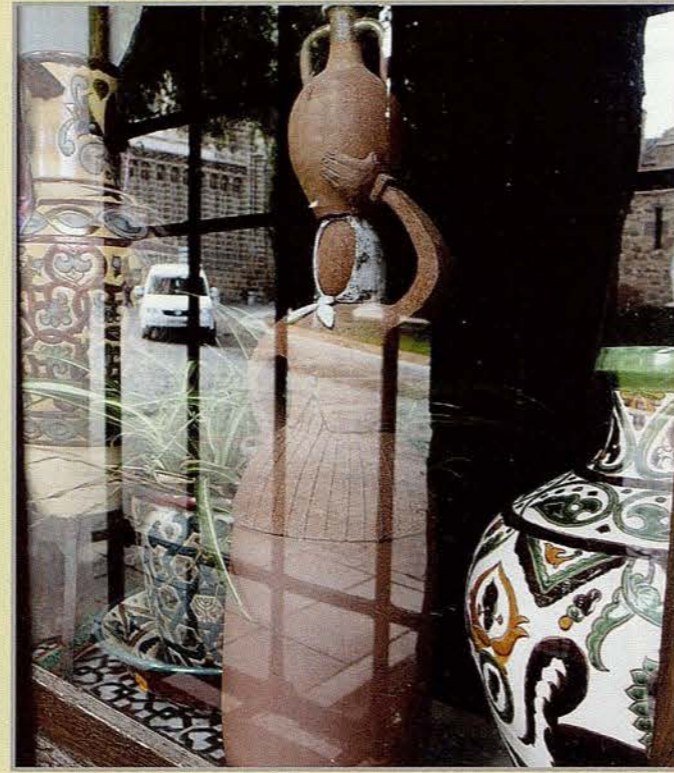
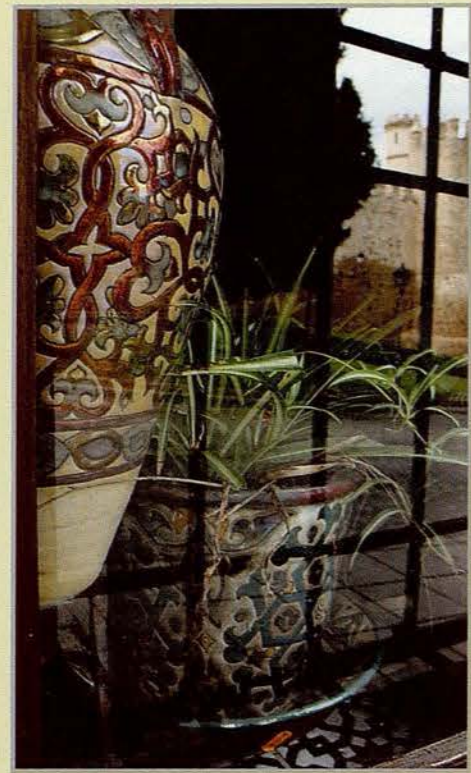
*Toledo,
día 20 de octubre, 2015*

*Sus tiendas
y negocios*

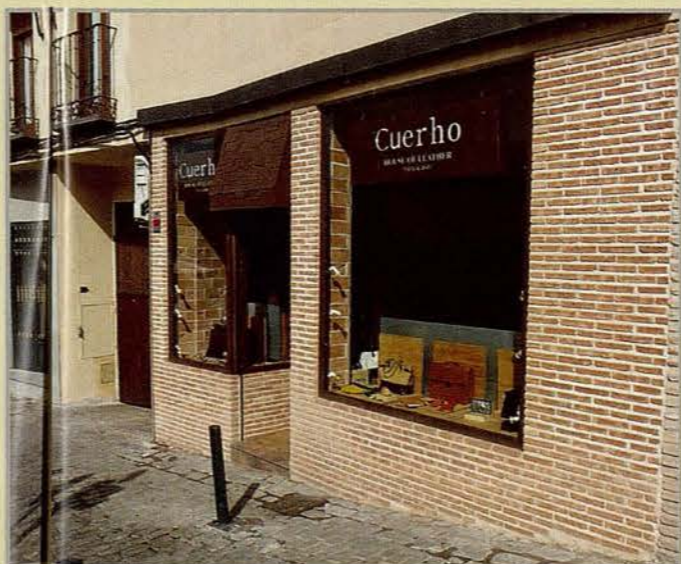
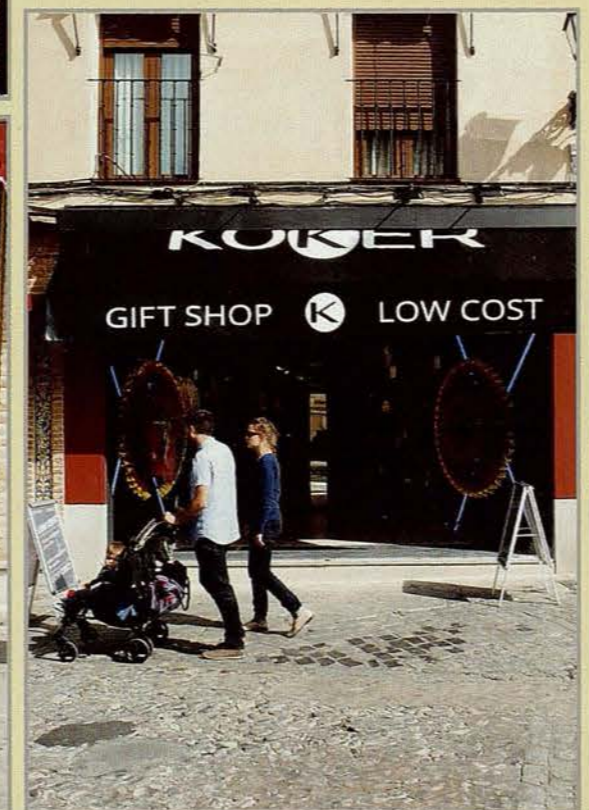
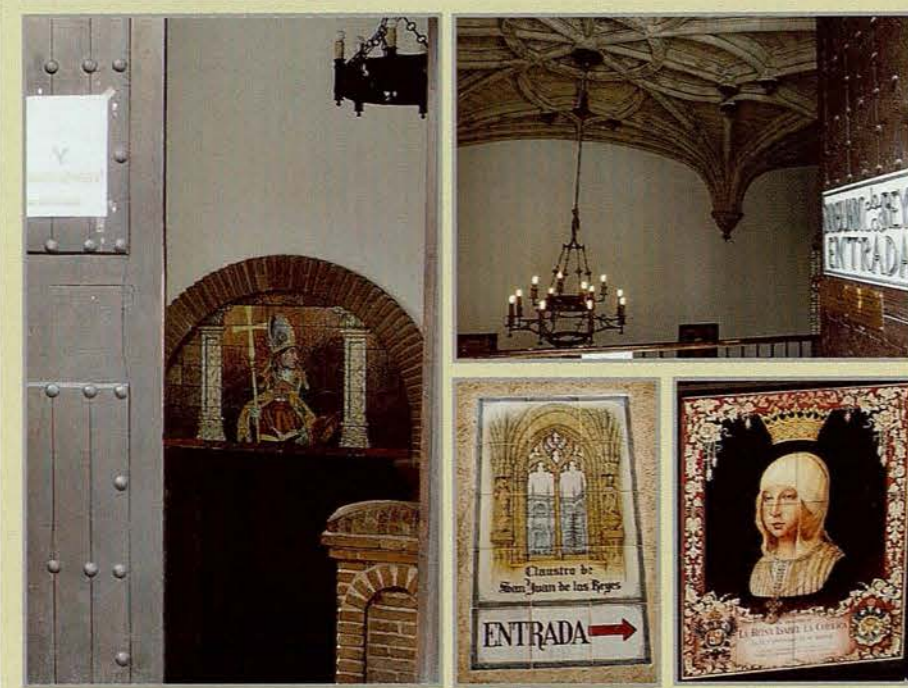
*de la Puerta
del Cambrón
a la calle
de las Armas*

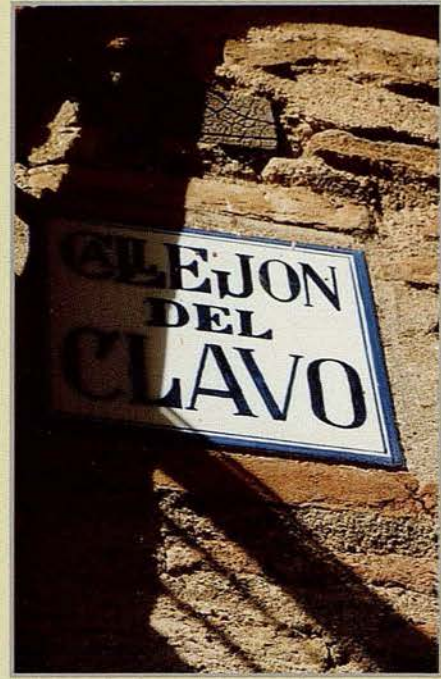






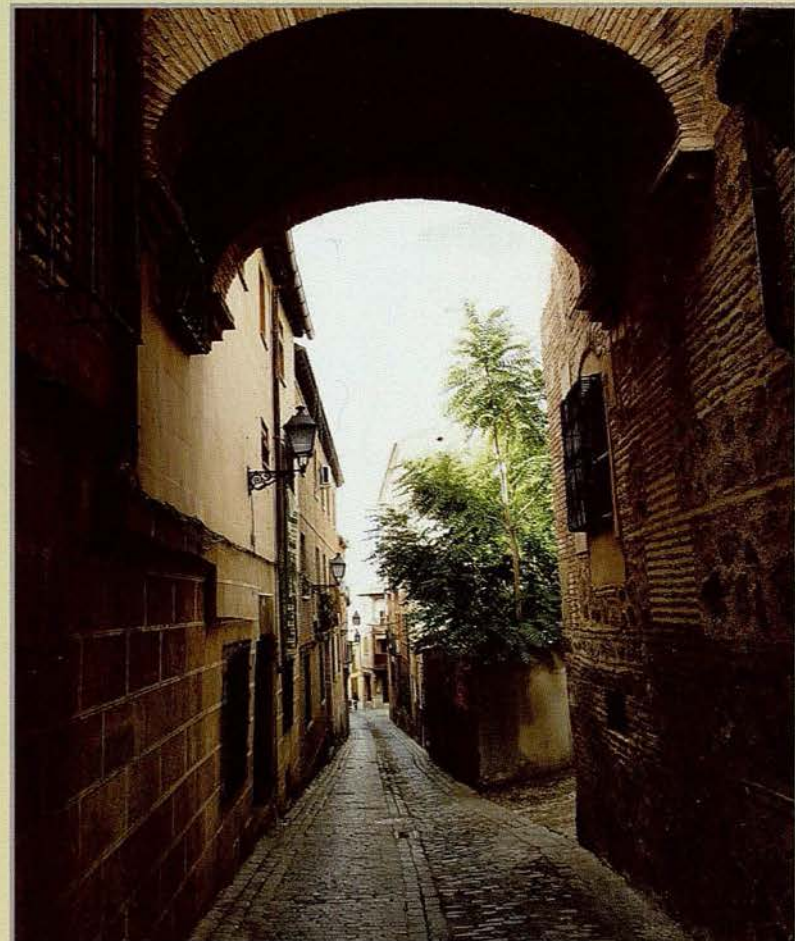
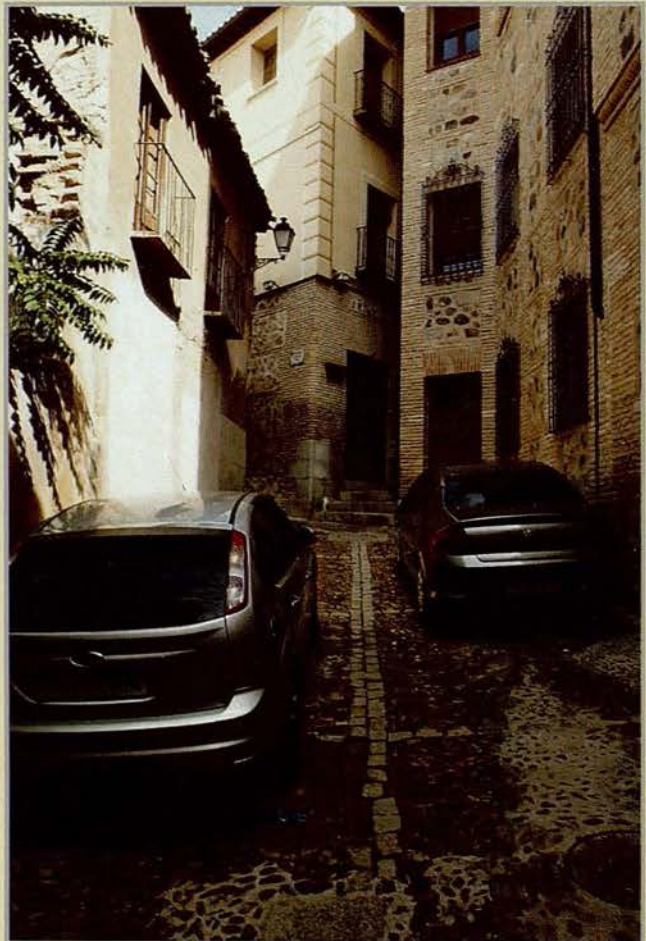
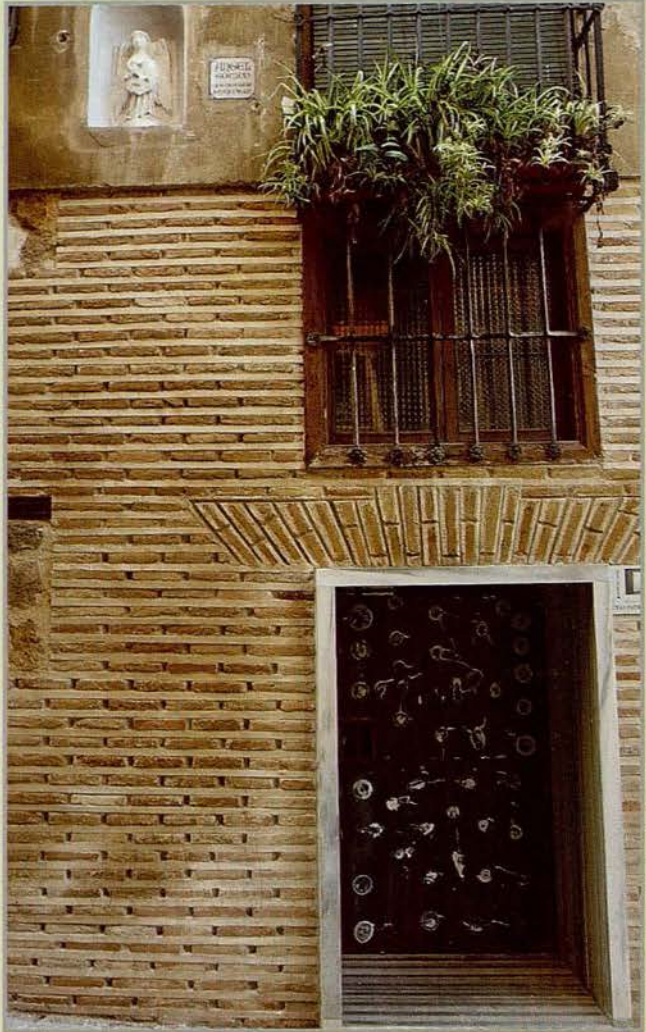
Antiguo Palacio de la Cava
frente a S. Juan de los Reyes







< Los Potenciano





Calle del ÁNGEL / Street



Una de las arterias principales y más antiguas de Toledo, pues unía el barrio judío con el centro de la ciudad. Debe su nombre a una estatuilla gótica con un escudo ornado con un león rampante que la preside hacia la mitad de su trazado. La leyenda habla de una dama de la corte que enfermó y a la que se le apareció un ángel anunciándole su curación. En ella se conservan unos baños judíos (al-bait al-sajun), que se pueden visitar.

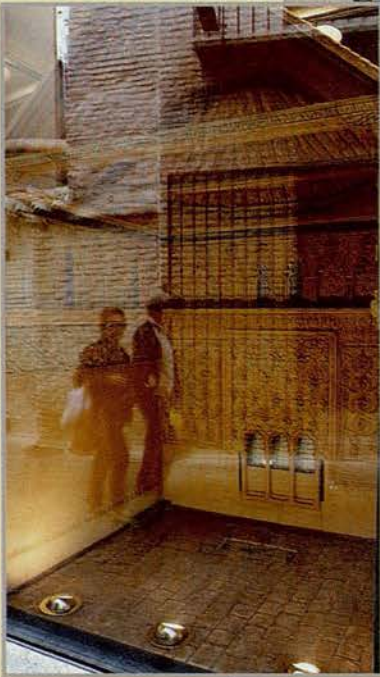
One of the main and oldest streets of Toledo since it linked the Jewish quarter with the center of the city. It owes its name to a Gothic statuette with a shield adorned with a rampant lion in the middle. The legend tells about a lady of the Court who got sick and an angel appeared telling her about her recovery. At this street, we can find some Jewish baths (al-bait al-sajun) which can be visited.



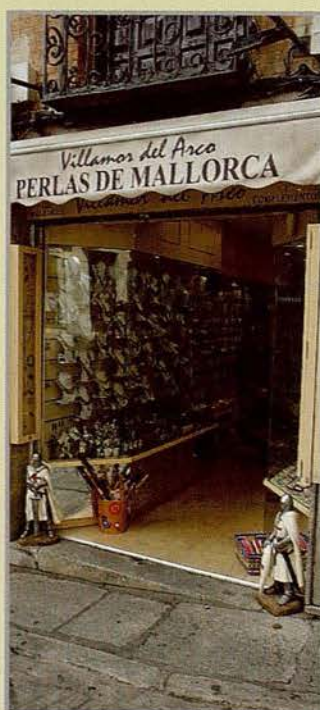


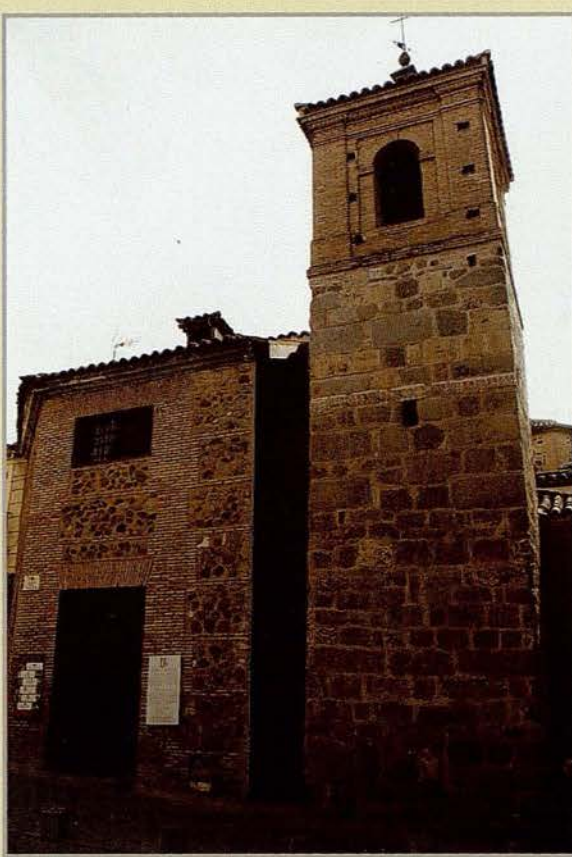


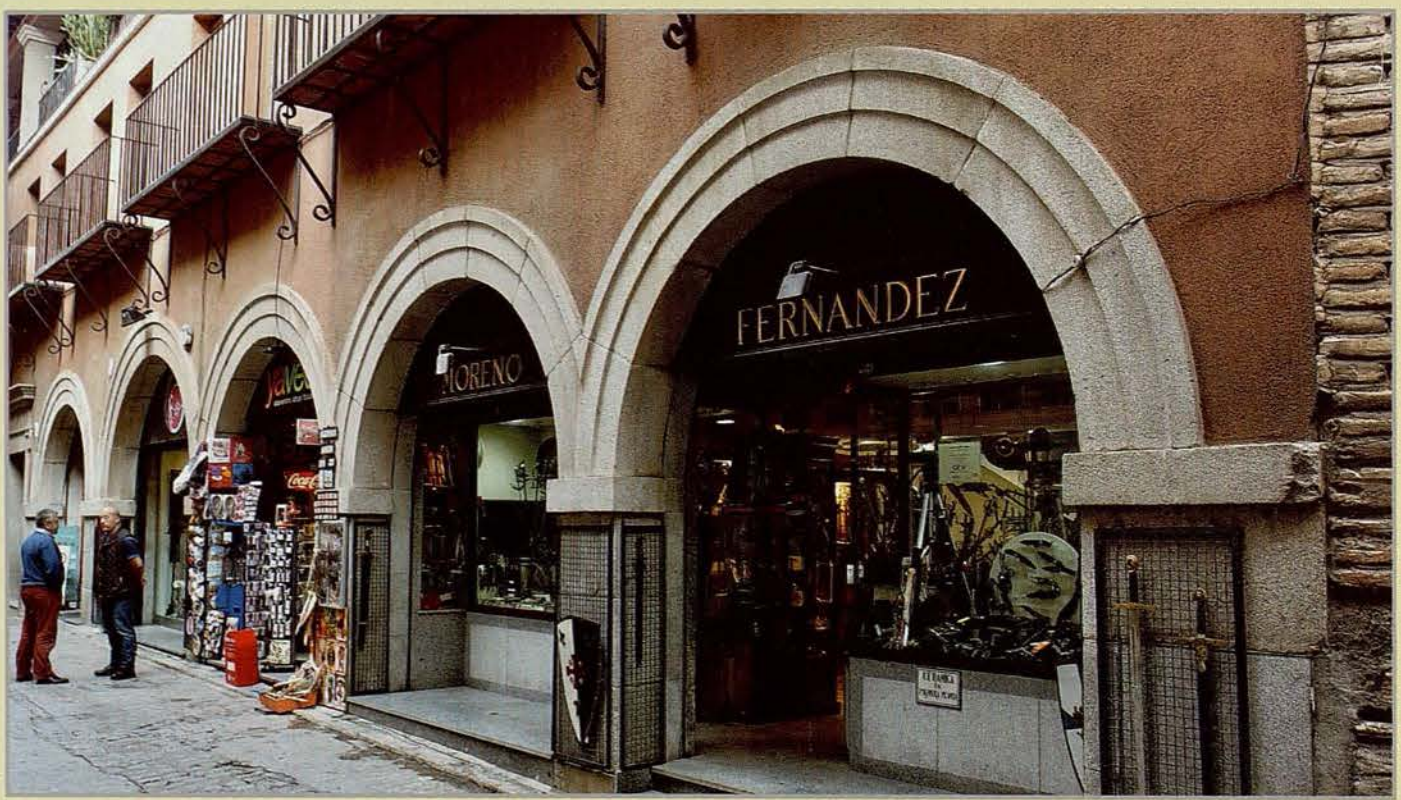
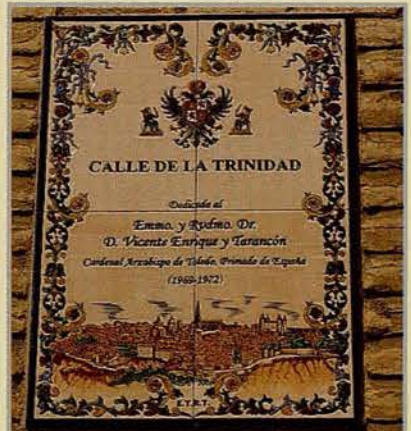
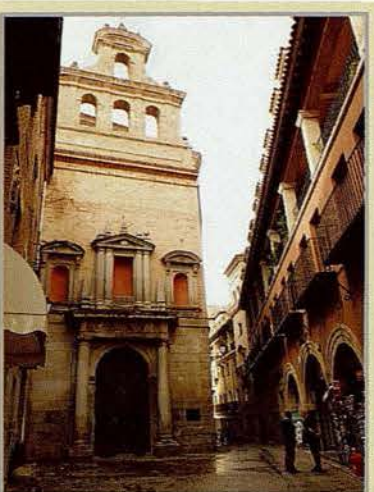


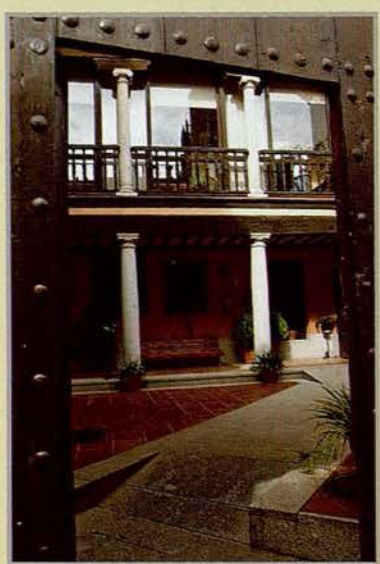
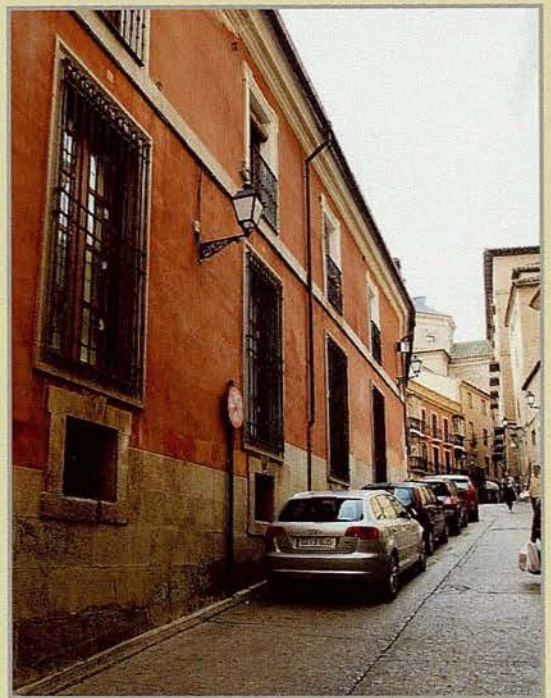
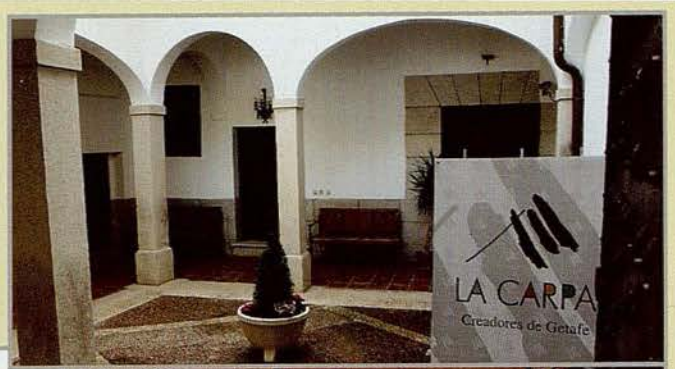




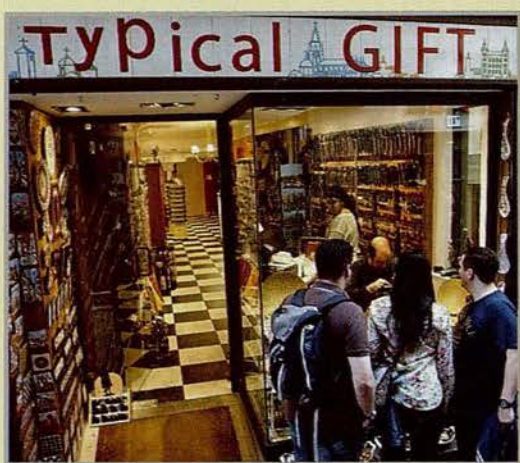
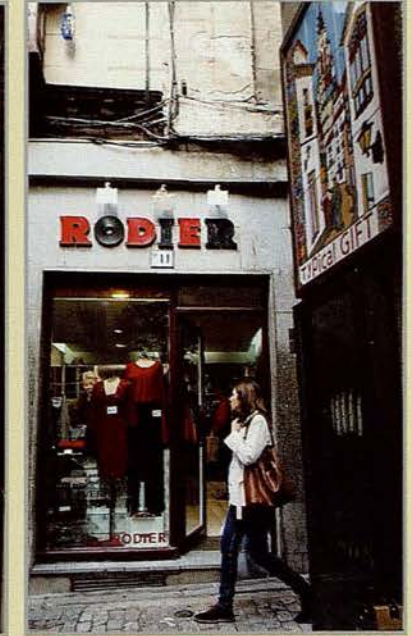
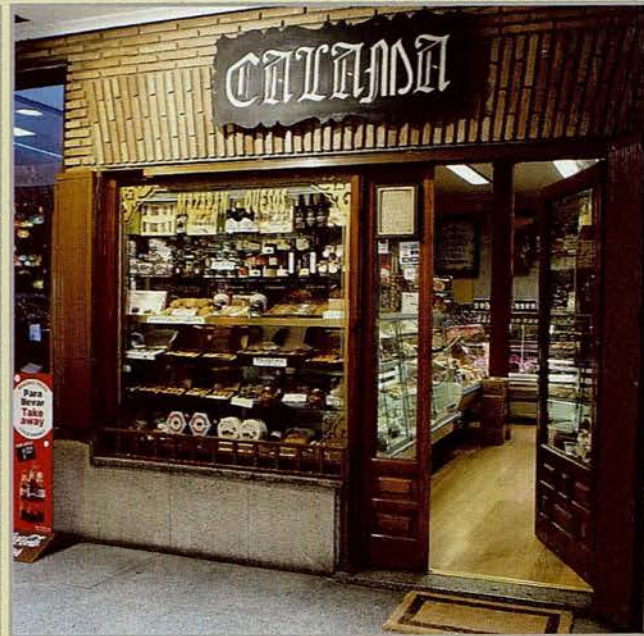




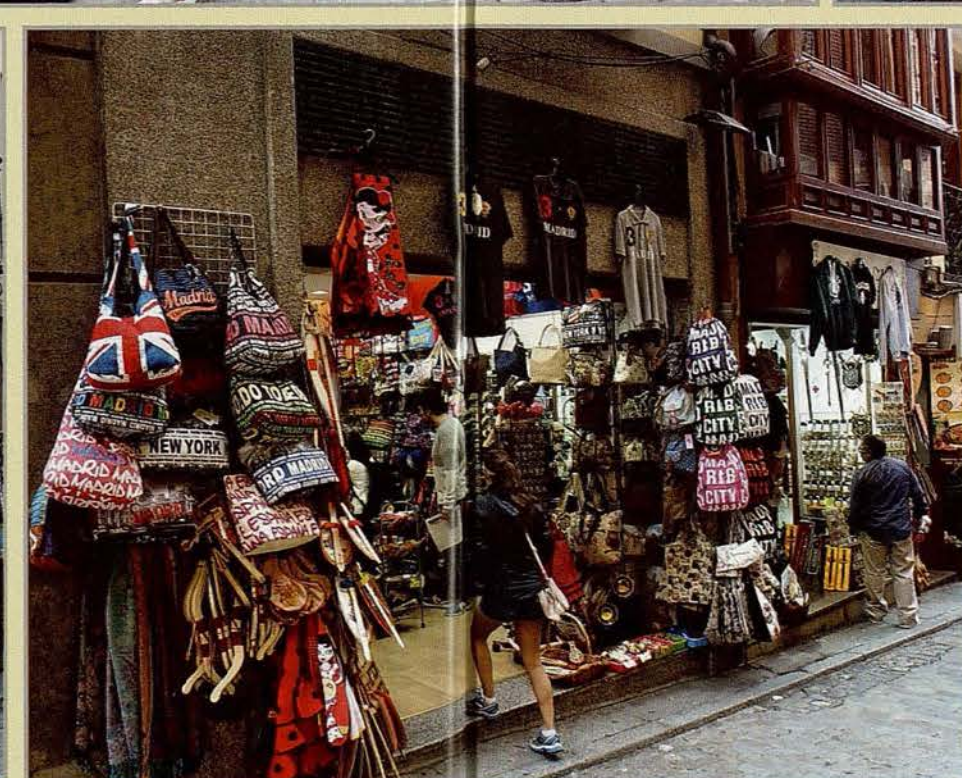
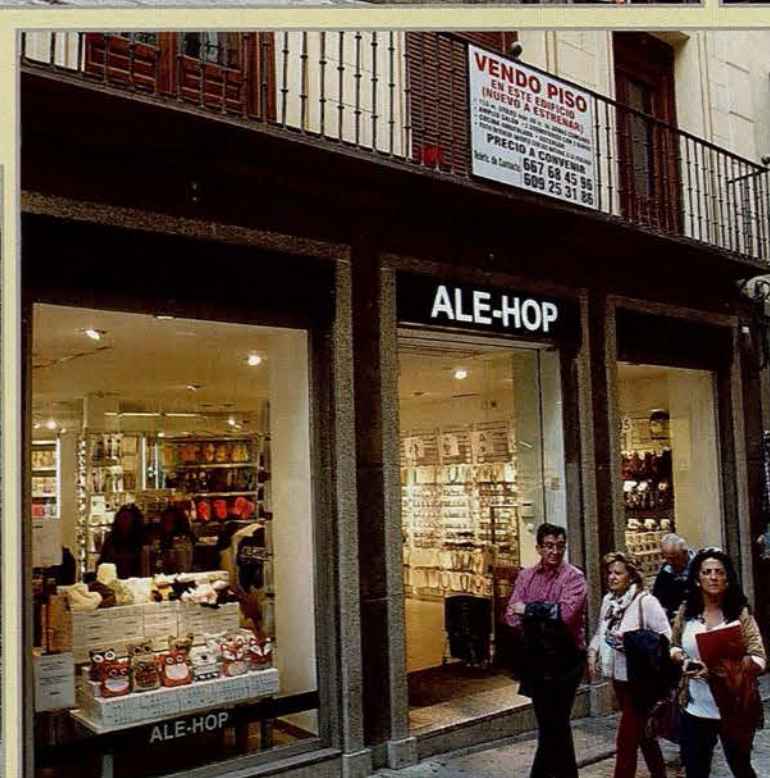
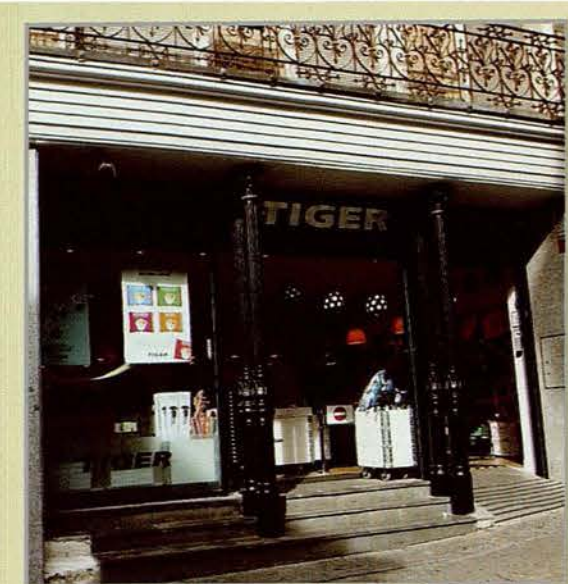


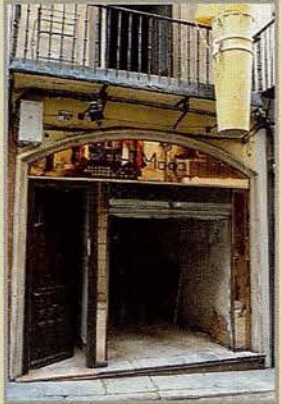


































Bad Marienberg,
en enero del año 2017
Karl Lach



80 00117 99936 1